

DT Companion Products

RMS/DeskTop Archive Manager

Now you can easily generate offsite archives or self-contained RMS/DeskTop repositories for distribution with the RMS/DeskTop Archive Manager (DT/AM) add-on.

Fully-Integrated Solution - DT/AM provides a fully-integrated archive and distribution mechanism for RMS/DeskTop. Accessing archived data is just as easy as it is for the data residing in your live repository. In fact, both your live and archived data appear alongside each other in the RMS/DeskTop Explorer!

Wide Variety of Supported Devices - DT/AM works with a multitude of storage devices, including DLT tape, CD-R, Zip disks, etc. In fact, any storage device that provides drive letter access works great with DT/AM.

Custom Data Organization Tools - Unlike "general purpose" backup programs, DT/AM finally makes it possible to group your information together into archive volumes based on their relationship, not just their creation time. Create a volume that contains all data pertaining to a specific customer or company division. Also, users may group documents together based on their retention requirements. It's all possible with DT/AM.

Minimize Archive Storage Needs - Government and industry regulations may require you to store an archive backup of data within a certain period of time. This results in prematurely generated archive volumes using only a fraction of media on which they are stored. Over time, this results in your media storage needs becoming over-inflated. DT/AM overcomes this issue by offering Cumulative Volume support, which generates consecutive replacement volumes for a given archive type until as much as possible of the storage media's capacity is used. Each cumulative volume update contains all the data stored by it's predecessor, allowing you to destroy or reuse the previous iteration and reduce storage requirements.

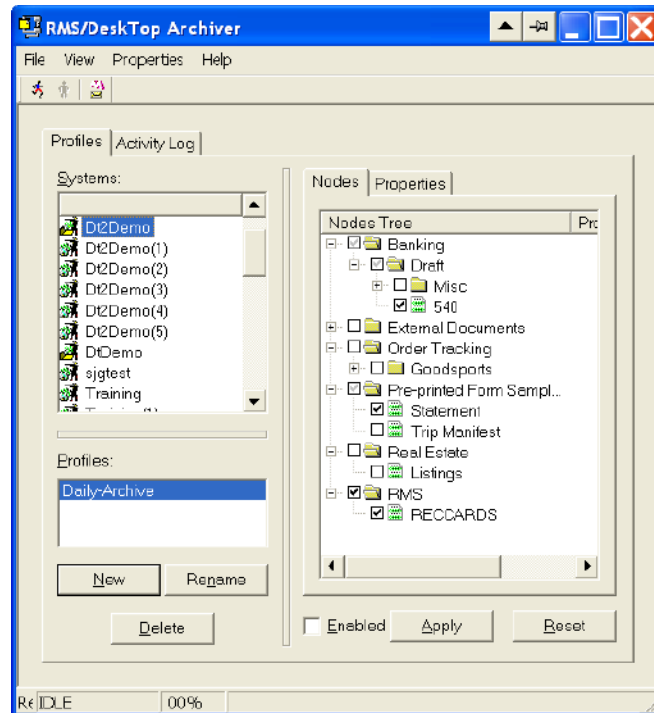
RMS/DeskTop AFP Viewer

The DT AFP Viewer add-on for RMS/DeskTop provides support for IBM Advanced Function Print (AFP) documents from within the RMS/DT application. No external viewing application required!

Fully supports the AFP document format - With the new AFP Viewer add-on, RMS/DeskTop can now display, search and print AFP documents. Custom fonts, graphical and overlay elements are all taken care of!

Fully integrated into RMS/DT - AFP documents are opened and displayed in their own viewing window inside RMS/DeskTop, just like ASCII text reports. View AFP documents and ASCII text reports side-by-side!

Wide Range of Magnification and Rotation possibilities - Magnify an AFP document's contents as much as 500 percent or as little as 10 percent. Rotate it as needed, even display 2 or 4 pages on-screen at a time!



Document Management For External Binary File Support

You can use the organizational and security capabilities of the DT repository to securely store any type of document, not just ASCII text reports. Whether it be a word processing document, spreadsheet or graphical image, DT will allow you to store multiple revisions and control who has access to it. Whenever an authorized user accesses the document, RMS/DeskTop launches the appropriate application with the document automatically opened! The IMPORTER does not reformat these files but does apply aging and versioning to the files. These files appear in the EXPLORER and when selected will launch the associated viewer application. For example: .doc file types will launch Microsoft Word, .xls will launch Microsoft Excel, .pdf will launch Adobe Acrobat Reader, etc. (assuming those applications are available to the user).

DT Highlights

DeskTop Viewer

- View any-size report
- View Multiple reports
- Change Fonts & Size
- Toolbar Icons
- Report Title Heading
- Page Number ID
- Select Area for COPY
- SEARCH
 - Text, Index, Date
 - Next, Previous
- GO TO Page XXX
- Green Bar On/Off
- Forms Overlay
- Annotations
 - Public or Private "Sticky Notes"
 - Highlights, Bookmarks
- Extraction
- Change Colors
- Column Rearrange
- Print
- Go to Index Table
- Page Advance
 - Next, End, Top, Prior
- Export

Index Tables

- Sort Ascending/Descending
- Sort Expression
- Column Calculate
- Filter Expression
- Search
- Boolean Search
- Column Rearrange
- Print
- Export
- Hyperlink to Report
- Column Hide
- COPY
- SAVE AS
- Multiple Indexes

DeskTop Explorer

- Hierarchy Tree
 - Click "+" to Expand
 - Multiple Systems
- Version Support
- Report ID Information
- Report Name
- Report Description
- Business Date
- Business Time
- # Pages in Report
- # Lines in Report
- Import Date
- Import Time
- Last Access Date
- # of Times Accessed
- Custom Entered User Information
- Flat-View Search
- Print
- Sort
- Import
- Export
- Extraction
 - Multiple reports Cross-Index Extraction

DeskTop Importer

- Moves Reports from Import Directory Inbox
- Converts to DFS file type
- Data Block, Compresses
- Builds Index keys, tables, related info
- Builds Explorer catalog
- Builds Index Field Table per Extraction Def.
- Ages, Purges, Manages
- Stages for Archiving
- NT Service

DeskTop File System

- Stored Objects Database
- Compressed & Encrypted
- Advanced "Data Blocking" technology
- Catalog List Selection "Explorer"
- MS Access or SQL Server

In 1981 Mantissa was the first company to deliver a mainframe **Automated Report Distribution and Output Management** system to the marketplace. Since that time we have led the way in developing systems to meet the real-world needs of data centers throughout the world. Contact your Mantissa Representative to learn more about how **Mantissa's RMS — The Report Management System™** can help your organization meet its output management, report availability, and paper reduction goals.

Mantissa Corporation

Two Perimeter Park South
Birmingham, AL 35243
www.mantissa.com
800 438 7367 Toll Free
205 968 3939 Direct
205 968 3932 Facsimile



ADMS, Advanced Datacenter Management Solutions, AOM, Advanced Output Management, ASO, Advanced Systems Operation, AEM, Automated Environment Management, RMS/Spool, RMS/DeskTop, RMS/WebAccess, iDovos, Identity Perfected, Positive Identity Control, iX, SynterPiece, Mantissa Directions, Infinite Operational Latitude and IOL are trademarks of Mantissa Corporation.
Mantissa, the Mantissa logo, THE REPORT MANAGEMENT SYSTEM, RMS, RDMS, QSERV, RMS/ONLINE, RDMS/SOFTCOPY, RMS/DESKTOP, OPS/MASTER, JOB/MASTER, RUN/MASTER, and CONSOLE/MASTER are registered trademarks of Mantissa Corporation.
All other company and product names are trademarks or registered trademarks of their respective companies.
© 1994-2007 Mantissa Corporation

FORM: RD_Product_Brief_070514(17x11).fm REVISED: 7/24/07



Advanced Output Management™



RMS/DeskTop™

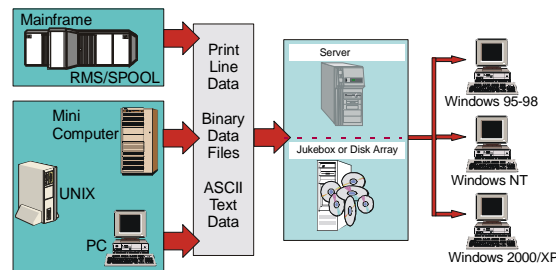
RMS/DeskTop, (DT) is a comprehensive output management and productivity tool for client-server environments. Friendly and easy to use, the DT Viewer client provides the casual user with full-page viewing, printing, searching and the ability to work with multiple reports. For the more advanced user, DT provides automatic index table creation, reformatting, exporting, forms overlay, highlighting and sticky notes annotation. For power-users, DT provides data mining, ad hoc extractions, index table spreadsheet filtering and CD-ROM production or distribution.

The DT Server provides an online database repository. Reports coming from mainframe applications are automatically downloaded using RMS/Spool. Versioning support and indexed field table creation are automatic at download import time. Report archiving is also automated. Security, auditability, affordability, reliability, flexibility and ease of use make DT the leading choice for enterprise solutions.

DT Server Architecture and Components

DeskTop File System Repository

The RMS/DeskTop File System Repository is a relational database of compressed reports. The Repository supports MS Access or SQL Server databases. The Repository can work with any server software that provides the file locking function. Report data in the Repository is highly compressed and encrypted. The Repository can be huge, holding millions of pages of report data. The Repository is designed for heavy volume and quick response.

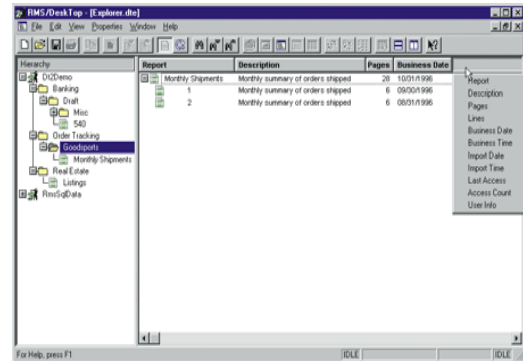


DeskTop IMPORTER and RMS/Spool Automatic Download

With Mantissa's RMS system running on the mainframe, report data can be automatically downloaded to a single RMS/DeskTop site or to a network of DeskTop PCs locations. Mainframe application output is captured by RMS/Basic, which then distributes report packets to RMS/Spool. RMS/Spool automatically downloads the report data through either a TCP/IP or VTAM network to a LAN or stand-alone DeskTop import directory. For mainframe reports not distributed by RMS or application output from any CPU (midrange or PC), the report files can be FTPed as ASCII text files to the DeskTop import directory inbox for capture into DT. The DeskTop IMPORTER continuously polls the import directory and initiates the file import process when a new file is discovered. Reports sent from RMS/Spool include header information which the IMPORTER uses as report properties in the Explorer catalog listing. Pre-set Extraction instructions which recognize report IDs can initiate actions such as building index tables. More on that later!

DeskTop EXPLORER

The Explorer gives the user a quick and easy way to select reports. Reports are organized in a hierarchical, tree/branch display. Double clicking on a report line opens & launches the report view window. Expanded views provide a report listing (right side) with eleven report definition properties for easy identification. Automatic version control organizes the list of available reports with the most recent version thereafter. Security is maintained so that the user sees only those reports to which the user has authorized access. The user can Search the Explorer by keyword, report name or date. Reports may be copied to a directory designated for CD-ROM production (by other rendering software).



DeskTop SECURE

The DeskTop Secure program provides a very flexible yet powerful security control over the system. The Administrator function controls authorization to the system. User password control and ID authorizations limit access. Users are granted privileges (i.e., print, copy, delete) by individual or group authorization using a "Everything-Except" or "Nothing-Except" methodology. Access can be secured to a single authorized individual. Reports can never be altered by users or administrators, thus ensuring acceptable audit control standards.

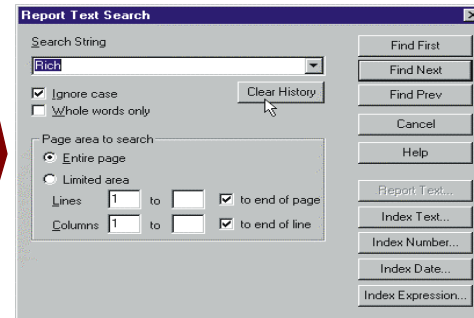
DT Viewer Features

Extensive Navigational Tools & Scrolling

The current page reference and caret position are shown at the bottom right of the screen. Page Up and Page Down keys advance one screen at a time. The Home and End keys take you to the first or last page of the report. The GoTo PAGE pop-up panel lets you jump to any page. The bouncing elevator Scroll Bar moves you quickly through the report. A drag & drop screen splitter holds column headings while you scroll through the report.

Searching

Selecting the Search icon opens the Report Text Search pop-up panel. Enter the search string or range criteria. The search finishes almost as fast as pressing the Find button, no matter how large the report. The line in which the search string is found is highlighted in blue, the search string is circled in red. Next and Previous item search icons help you jump through the report. DeskTop remembers each search criteria so searches may be recalled without having to re-key.

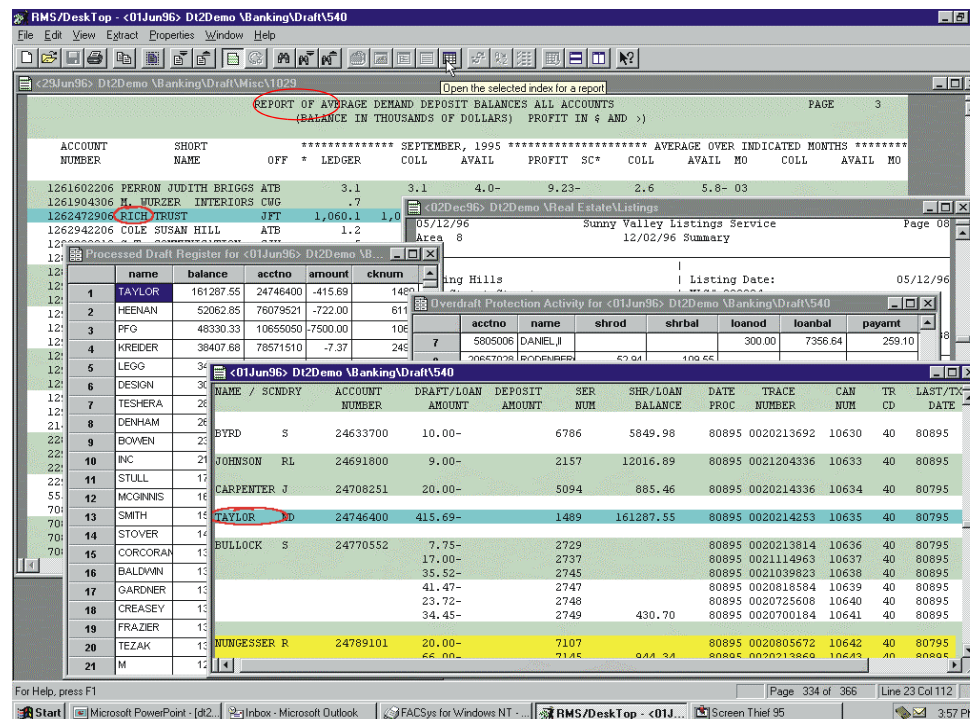


User Defined Properties

The user may select the font style, size and color, and toggle the Green Bar overlay on or off. The Column Rearrangement feature lets the user change the column order when it is handy to have an alternate view of the report. COPY icon copies selected data (Box, Line, Stream or Page Select) to the clipboard to Paste into other PC applications. Icon toolbar is customizable.

Full Page Report Viewing

A standard report page 132 characters wide can be viewed on a typical screen because the display width is a function of the user's selection of window and font size, independent of the application that produced the report. Longer line lengths — up to 3000 characters - can be viewed if you have enough monitor real estate! A sliding elevator bar provides horizontal and vertical scrolling within the report viewing window.

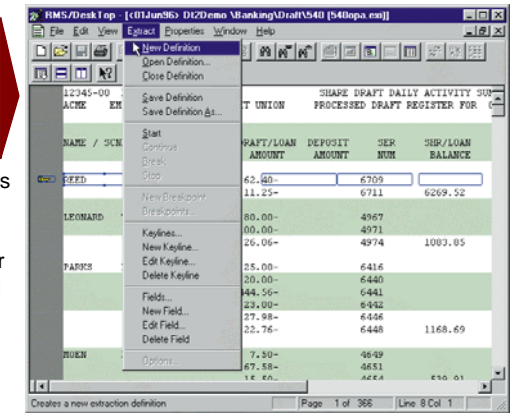


Open Multiple Reports

Any number of reports may be opened simultaneously or the same report may be opened multiple times, (i.e., compare page 47 data to page 1305 data). Windows may be sized, minimized, maximized, cascaded, or tiled for record or page comparisons.

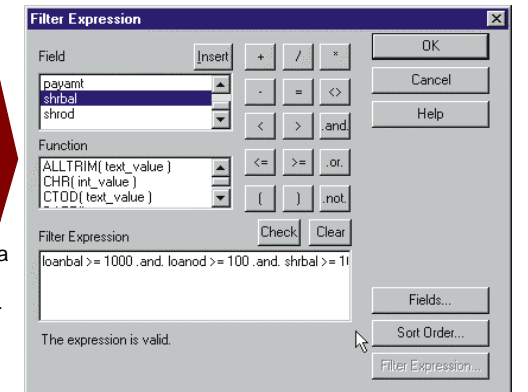
Extraction

A built-in data extraction (Data Mining) engine lets you extract data from any report in the Repository and format the result into the 33 most popular PC file formats, including XLS and HTML. Extraction definitions are easily created as you click and drag over fields. Ad hoc extractions created this way may be further mined in the DT window, saved or discarded. Definitions may be saved and recalled to make the creation of successive reports easy. In addition, Extraction definitions can be included in the DT Importer instructions for automatically producing index tables.



Automatic Index Tables

Index Tables provide viewing and searching flexibility and performance. They can be created automatically from import definition instructions. View a table by clicking on the TABLE icon. Then, when you double click on an index table cell you are instantly hyper-linked to that record in the report view. Multiple index tables may be created for a single report. The tables can be data mined through the Filter Expression pop-up. They can be printed, Saved or exported fully parsed into other applications such as Excel, etc.



Annotation Manager

DT's visual annotation tools makes it easy to draw attention to specific report contents, jump quickly between points of interest and even affix notes to a page. Choose from fifteen different highlight colors, easily navigate existing annotations using the integrated Annotation Manager or control who is able to view and edit annotations using the integrated annotation security. "STICKY NOTE", like annotations, can be created and "pasted" on the report page. Notes can be publicly or privately viewed. Each note lists the author and is time stamped. The Annotation Manager lists all notes for a report and hyper-links the user to a selected note listing.

Exporting And Reformatting

Reports and tables may be exported, fully parsed, to other PC applications with File "Save As". Multiple reports may be selected in a single export operation. Thirty-three popular PC file formats are supported. These include: .xls, .wk4, .txt, .dbf, .htm & .fxd . . .

Forms Overlay

Do you work with pre-printed forms? RMS/DeskTop's Form Overlay support allows to you to view your report data on-screen just like the final output would appear. Invoices, statements, purchase orders, routing tickets, verification receipts and other business forms can be viewed with the data as it was originally produced. No massive .PDF files, no expensive image-capture processes. It's simple to use, simple to setup and powerfully effective.

Sophisticated Printing Control

While DT greatly reduces the need for hardcopy output, you may still need to occasionally print a report. DT's powerful printing engine allows you to generate hardcopy of not only the report data, but also index table spreadsheets, annotations or forms overlay imagery as well. It offers the unique ability to bypass Windows printer drivers and feed line-mode data directly to printers, allowing you to take full advantage of high-speed line-mode printers. Logical Printers provide precise control over report printing, including top/left margins, exact font pitch, and exact line spacing. Each logical printer saves Windows printer device specific settings. This allows precise registration for aligning report data on preprinted forms. Also, logical printers provide for character mode type printers typically used with multi-part forms (allows native print speeds).

WebAccess Integration

RMS/WebAccess is now seamlessly integrated within RMS/DeskTop to provide viewing of RMS/Online documents over the internet.